

WFSB(M) (Boss type)

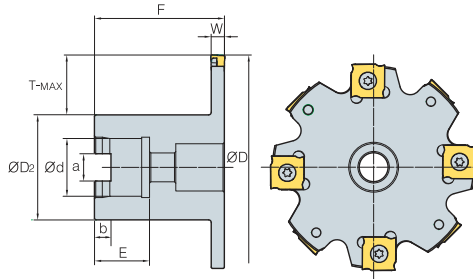


Fig. 1

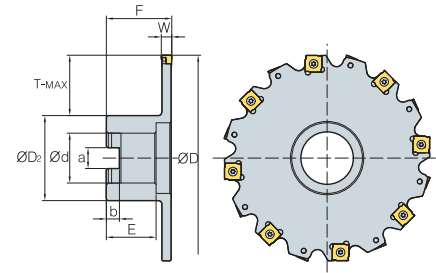


Fig. 2



•AR: -2°
•RR:-12°

(mm)

Designation	ØD	W	T-MAX	ØD ₂	Ød	a	b	F	E	Insert	Screw	Wrench	
WFSBM 080R/L-T04	8	80	4	17	40	22	10.4	6.3	50	21	SNHT11023R/L-WX	PTMA03503	TW09S
080R/L-T05	8	80	5	17	40	22	10.4	6.3	50	21	SNHT1103R/L-WX	PTMA03504	TW09S
080R/L-T06	8	80	6	17	40	22	10.4	6.3	50	21	SNHT12035R/L-WX	PTMA04045F	TW15S
WFSB (WFSBM) 100R/L-T04	10	100	4	21	50 (48)	25.4 (27)	9.5 (12.4)	6 (7)	50	25	SNHT11023R/L-WX	PTMA03503	TW09S
100R/L-T05	10	100	5	21	50 (48)	25.4 (27)	9.5 (12.4)	6 (7)	50	25	SNHT1103R/L-WX	PTMA03504	TW09S
100R/L-T06	10	100	6	21	50 (48)	25.4 (27)	9.5 (12.4)	6 (7)	50	25	SNHT12035R/L-WX	PTMA04045F	TW15S
100R/L-T07	10	100	7	21	50 (48)	25.4 (27)	9.5 (12.4)	6 (7)	50	25	SNHT1204R/L-WX	PTMA0405F	TW15S
100R/L-T08	10	100	8	21	50 (48)	25.4 (27)	9.5 (12.4)	6 (7)	50	25	SNHT12045R/L-WX	PTMA0406F	TW15S
100R/L-T09	10	100	9	21	50 (48)	25.4 (27)	9.5 (12.4)	6 (7)	50	25	SNHT1205R/L-WX	PTMA0407F	TW15S
100R/L-T10	10	100	10	21	50 (48)	25.4 (27)	9.5 (12.4)	6 (7)	50	25	SNHT12054R/L-WX	PTMA0408F	TW15S
125R/L-T04	12	125	4	30	60 (58)	31.75 (32)	12.7 (14.4)	8	50	32 (30)	SNHT11023R/L-WX	PTMA03503	TW09S
125R/L-T05	12	125	5	30	60 (58)	31.75 (32)	12.7 (14.4)	8	50	32 (30)	SNHT1103R/L-WX	PTMA03504	TW09S
125R/L-T06	12	125	6	30	60 (58)	31.75 (32)	12.7 (14.4)	8	50	32 (30)	SNHT12035R/L-WX	PTMA04045F	TW15S
125R/L-T07	12	125	7	30	60 (58)	31.75 (32)	12.7 (14.4)	8	50	32 (30)	SNHT1204R/L-WX	PTMA0405F	TW15S
125R/L-T08	12	125	8	30	60 (58)	31.75 (32)	12.7 (14.4)	8	50	32 (30)	SNHT12045R/L-WX	PTMA0406F	TW15S
125R/L-T09	12	125	9	30	60 (58)	31.75 (32)	12.7 (14.4)	8	50	32 (30)	SNHT1205R/L-WX	PTMA0407F	TW15S
125R/L-T10	12	125	10	30	60 (58)	31.75 (32)	12.7 (14.4)	8	50	32 (30)	SNHT12054R/L-WX	PTMA0408F	TW15S
160R/L-T04	16	160	4	43	70	38.1 (40)	15.9 (16.4)	10 (9)	60	38 (32)	SNHT11023R/L-WX	PTMA03503	TW09S
160R/L-T05	16	160	5	43	70	38.1 (40)	15.9 (16.4)	10 (9)	60	38 (32)	SNHT1103R/L-WX	PTMA03504	TW09S
160R/L-T06	16	160	6	43	70	38.1 (40)	15.9 (16.4)	10 (9)	60	38 (32)	SNHT12035R/L-WX	PTMA04045F	TW15S
160R/L-T07	16	160	7	43	70	38.1 (40)	15.9 (16.4)	10 (9)	60	38 (32)	SNHT1204R/L-WX	PTMA0405F	TW15S
160R/L-T08	16	160	8	43	70	38.1 (40)	15.9 (16.4)	10 (9)	60	38 (32)	SNHT12045R/L-WX	PTMA0406F	TW15S
160R/L-T09	16	160	9	43	70	38.1 (40)	15.9 (16.4)	10 (9)	60	38 (32)	SNHT1205R/L-WX	PTMA0407F	TW15S
160R/L-T10	16	160	10	43	70	38.1 (40)	15.9 (16.4)	10 (9)	60	38 (32)	SNHT12054R/L-WX	PTMA0408F	TW15S
160R/L-T11	16	160	11	43	70	38.1 (40)	15.9 (16.4)	10 (9)	60	38 (32)	SNHT1206R/L-WX	PTKA0409F	TW15S
160R/L-T12	16	160	12	43	70	38.1 (40)	15.9 (16.4)	10 (9)	60	38 (32)	SNHT12065R/L-WX	PTKA0410F	TW15S
160R/L-T13	16	160	13	43	70	38.1 (40)	15.9 (16.4)	10 (9)	60	38 (32)	SNHT1207R/L-WX	PTKA0411F	TW15S
160R/L-T14	16	160	14	43	70	38.1 (40)	15.9 (16.4)	10 (9)	60	38 (32)	SNHT12075R/L-WX	PTKA0412F	TW15S
200R/L-T06	18	200	6	53	90	50.8 (40)	19.1 (16.4)	11 (9)	65	38 (32)	SNHT12035R/L-WX	PTMA04045F	TW15S
200R/L-T07	18	200	7	53	90	50.8 (40)	19.1 (16.4)	11 (9)	65	38 (32)	SNHT1204R/L-WX	PTMA0405F	TW15S
200R/L-T08	18	200	8	53	90	50.8 (40)	19.1 (16.4)	11 (9)	65	38 (32)	SNHT12045R/L-WX	PTMA0406F	TW15S
200R/L-T09	18	200	9	53	90	50.8 (40)	19.1 (16.4)	11 (9)	65	38 (32)	SNHT1205R/L-WX	PTMA0407F	TW15S
200R/L-T10	18	200	10	53	90	50.8 (40)	19.1 (16.4)	11 (9)	65	38 (32)	SNHT12054R/L-WX	PTMA0408F	TW15S
200R/L-T11	18	200	11	53	90	50.8 (40)	19.1 (16.4)	11 (9)	65	38 (32)	SNHT1206R/L-WX	PTKA0409F	TW15S
200R/L-T12	18	200	12	53	90	50.8 (40)	19.1 (16.4)	11 (9)	65	38 (32)	SNHT12065R/L-WX	PTKA0410F	TW15S
200R/L-T13	18	200	13	53	90	50.8 (40)	19.1 (16.4)	11 (9)	65	38 (32)	SNHT1207R/L-WX	PTKA0411F	TW15S
200R/L-T14	18	200	14	53	90	50.8 (40)	19.1 (16.4)	11 (9)	65	38 (32)	SNHT12075R/L-WX	PTKA0412F	TW15S
250R/L-T06	20	250	6	73 (78)	100 (90)	50.8 (40)	19.1 (16.4)	11 (9)	65	38 (32)	SNHT12035R/L-WX	PTMA04045F	TW15S
250R/L-T07	20	250	7	73 (78)	100 (90)	50.8 (40)	19.1 (16.4)	11 (9)	65	38 (32)	SNHT1204R/L-WX	PTMA0405F	TW15S
250R/L-T08	20	250	8	73 (78)	100 (90)	50.8 (40)	19.1 (16.4)	11 (9)	65	38 (32)	SNHT12045R/L-WX	PTMA0406F	TW15S
250R/L-T09	20	250	9	73 (78)	100 (90)	50.8 (40)	19.1 (16.4)	11 (9)	65	38 (32)	SNHT1205R/L-WX	PTMA0407F	TW15S
250R/L-T10	20	250	10	73 (78)	100 (90)	50.8 (40)	19.1 (16.4)	11 (9)	65	38 (32)	SNHT12054R/L-WX	PTMA0408F	TW15S
250R/L-T11	20	250	11	73 (78)	100 (90)	50.8 (40)	19.1 (16.4)	11 (9)	65	38 (32)	SNHT1206R/L-WX	PTKA0409F	TW15S
250R/L-T12	20	250	12	73 (78)	100 (90)	50.8 (40)	19.1 (16.4)	11 (9)	65	38 (32)	SNHT12065R/L-WX	PTKA0410F	TW15S
250R/L-T13	20	250	13	73 (78)	100 (90)	50.8 (40)	19.1 (16.4)	11 (9)	65	38 (32)	SNHT1207R/L-WX	PTKA0411F	TW15S
250R/L-T14	20	250	14	73 (78)	100 (90)	50.8 (40)	19.1 (16.4)	11 (9)	65	38 (32)	SNHT12075R/L-WX	PTKA0412F	TW15S

Available inserts E23

•Ø80: Fig. 1, •Ø100~Ø250: Fig. 2 ()Metric size

